

Melvin D. Cooper

Lieutenant, 1st Corps
Army of the United States





FEB 1943 - INDUCTED AT FT. LEAVENWORTH, KS.
 MAR 1943 - BASIC TRAINING - ST. PETERSBURG, FLA.
 MAY 1943 - AERIAL GUNNERY - LAREDO, TEX.
 AUG 1943 - AIRPLANE MECHANICS - KEESLER FIELD, MISS.
 DEC 1943 - COLLEGE TRAINING - HUNTINGTON, W. VA.
 MAR 1944 - PRE-FLIGHT - ELLINGTON FIELD, HOUSTON, TEX.
 APR 1944 - ADVANCED BOMBARDIER - SAN ANGELO, TEX.
 JULY 1944 - COMMISSIONED 2ND LT. AUS
 AUG 1944 - CREW TRAINING - SIOUX CITY, IA.
 FEB 1945 - THORLEIGH AB - BEDFORDSHIRE, ENG.
 JUNE 1945 - MARRAKECH, MOROCCO, AFRICA
 NOV. 1945 - GIEBELSTADT, GERMANY
 JAN. 1946 - ISTRES, FRANCE
 AUG. 1946 - SEPARATION AT FT. LEAVENWORTH, KS.

Top L/R

Bombardier

Robert D. Cooper

Co. Pilot

Wallace Pochtmom

Navigator
 Exley Manning

Relief
 Edyan R. Smith

Radio Operator
 Brown

Toward
 Axner
 Tail Gunner

James
 Reddy
 Gunner

Stanley
 Lynn
 Engineer

Army Air Forces Bombardier School
 of
 San Angelo, Texas

announces the graduation of
 Class 44-10 DR

Saturday morning, July twenty-second
 nineteen hundred and forty-four
 at ten o'clock
 Post Theatre



Belvin D. Cooper



Belvin D. Cooper



W/As Cooper, Smith, Ealey and Brown



Snicker and Weaver






L/R

Pilot-unknown

Navigater
Snider

Bombardier
Melvin D. Cooper



WING SPAN
LENGTH
HEIGHT
CROSS WEIGHT
POWER

SPEEDS
CEILING
CLIMB
OPERATING RANGE

100 feet (31 m)	100 mph (161 km/h)
175 feet (53.3 m)	150 mph (241 km/h)
190 feet (57.9 m)	175 mph (281 km/h)
200 feet (61 m)	200 mph (322 km/h)
210 feet (64 m)	225 mph (361 km/h)
220 feet (67 m)	250 mph (402 km/h)
230 feet (70 m)	275 mph (443 km/h)
240 feet (73 m)	300 mph (483 km/h)
250 feet (76 m)	325 mph (524 km/h)
260 feet (79 m)	350 mph (563 km/h)
270 feet (82 m)	375 mph (604 km/h)
280 feet (85 m)	400 mph (644 km/h)
290 feet (88 m)	425 mph (685 km/h)
300 feet (91 m)	450 mph (725 km/h)
310 feet (94 m)	475 mph (766 km/h)
320 feet (97 m)	500 mph (806 km/h)
330 feet (100 m)	525 mph (847 km/h)
340 feet (103 m)	550 mph (887 km/h)
350 feet (106 m)	575 mph (928 km/h)
360 feet (109 m)	600 mph (968 km/h)
370 feet (112 m)	625 mph (1009 km/h)
380 feet (115 m)	650 mph (1049 km/h)
390 feet (118 m)	675 mph (1090 km/h)
400 feet (121 m)	700 mph (1130 km/h)
410 feet (124 m)	725 mph (1171 km/h)
420 feet (127 m)	750 mph (1211 km/h)
430 feet (130 m)	775 mph (1252 km/h)
440 feet (133 m)	800 mph (1292 km/h)
450 feet (136 m)	825 mph (1333 km/h)
460 feet (139 m)	850 mph (1373 km/h)
470 feet (142 m)	875 mph (1414 km/h)
480 feet (145 m)	900 mph (1454 km/h)
490 feet (148 m)	925 mph (1495 km/h)
500 feet (151 m)	950 mph (1535 km/h)
510 feet (154 m)	975 mph (1576 km/h)
520 feet (157 m)	1000 mph (1616 km/h)
530 feet (160 m)	1025 mph (1657 km/h)
540 feet (163 m)	1050 mph (1697 km/h)
550 feet (166 m)	1075 mph (1738 km/h)
560 feet (169 m)	1100 mph (1778 km/h)
570 feet (172 m)	1125 mph (1819 km/h)
580 feet (175 m)	1150 mph (1859 km/h)
590 feet (178 m)	1175 mph (1900 km/h)
600 feet (181 m)	1200 mph (1940 km/h)
610 feet (184 m)	1225 mph (1981 km/h)
620 feet (187 m)	1250 mph (2021 km/h)
630 feet (190 m)	1275 mph (2062 km/h)
640 feet (193 m)	1300 mph (2102 km/h)
650 feet (196 m)	1325 mph (2143 km/h)
660 feet (199 m)	1350 mph (2183 km/h)
670 feet (202 m)	1375 mph (2224 km/h)
680 feet (205 m)	1400 mph (2264 km/h)
690 feet (208 m)	1425 mph (2305 km/h)
700 feet (211 m)	1450 mph (2345 km/h)
710 feet (214 m)	1475 mph (2386 km/h)
720 feet (217 m)	1500 mph (2426 km/h)
730 feet (220 m)	1525 mph (2467 km/h)
740 feet (223 m)	1550 mph (2507 km/h)
750 feet (226 m)	1575 mph (2548 km/h)
760 feet (229 m)	1600 mph (2588 km/h)
770 feet (232 m)	1625 mph (2629 km/h)
780 feet (235 m)	1650 mph (2669 km/h)
790 feet (238 m)	1675 mph (2710 km/h)
800 feet (241 m)	1700 mph (2750 km/h)
810 feet (244 m)	1725 mph (2791 km/h)
820 feet (247 m)	1750 mph (2831 km/h)
830 feet (250 m)	1775 mph (2872 km/h)
840 feet (253 m)	1800 mph (2912 km/h)
850 feet (256 m)	1825 mph (2953 km/h)
860 feet (259 m)	1850 mph (2993 km/h)
870 feet (262 m)	1875 mph (3034 km/h)
880 feet (265 m)	1900 mph (3074 km/h)
890 feet (268 m)	1925 mph (3115 km/h)
900 feet (271 m)	1950 mph (3155 km/h)
910 feet (274 m)	1975 mph (3196 km/h)
920 feet (277 m)	2000 mph (3236 km/h)
930 feet (280 m)	2025 mph (3277 km/h)
940 feet (283 m)	2050 mph (3317 km/h)
950 feet (286 m)	2075 mph (3358 km/h)
960 feet (289 m)	2100 mph (3398 km/h)
970 feet (292 m)	2125 mph (3439 km/h)
980 feet (295 m)	2150 mph (3479 km/h)
990 feet (298 m)	2175 mph (3520 km/h)
1000 feet (301 m)	2200 mph (3560 km/h)



B-17



Air Force Base
Thurleigh England



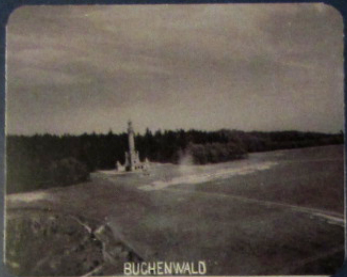
Snider and Nelvin



Commander
Nelvin D. Tuopala



Top Gunner
Jukka

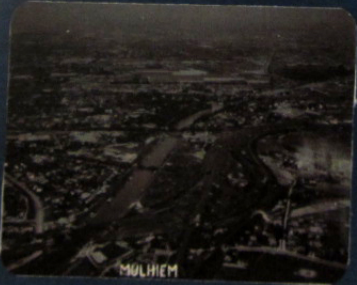


BUCHENWALD



BUCHENWALD

Prison Camp

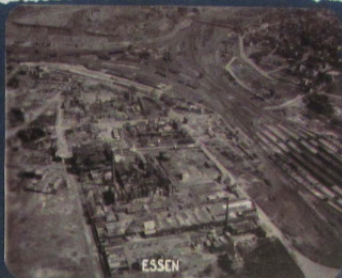


MULHEIM



MULHEIM

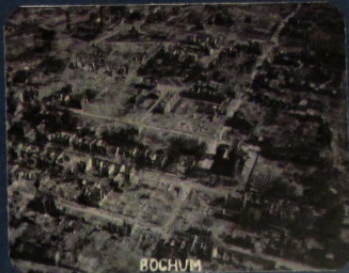








BOCHUM



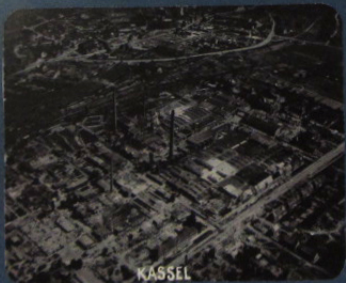
BOCHUM



BOCHUM



BOCHUM





306th BOMBARDMENT GROUP (H) B-17
 "First Over Germany"
 8th AIR FORCE WW II
 THURLEIGH, ENGLAND
 1942 to 1945



The 306th Saw 241 missions with an average of 15.1 B-17's each time. This adds up to 807 bombers from the 306th that attacked Nazi targets.

NOTES RECORDED

COOPER, MELVIN D., Lt., 02045340, Bomb.,
 349th Bomb Sq (H), 306th Bomb Gp (H), has
 completed the following sorties over enemy
 or enemy occupied countries:

1. 21 Feb 45 Nurnberg, Germany
2. 22 Feb 45 Wittstock, Germany
3. 23 Feb 45 Plauen, Germany
4. 26 Feb 45 Berlin, Germany
5. 27 Feb 45 Leipzig, Germany
6. 28 Feb 45 Rega, Germany
7. 2 Mar 45 Botten, Germany
8. 4 Mar 45 Elm, Germany
9. 7 Mar 45 Glessen, Germany
10. 12 Mar 45 Schweinande, Germany
11. 14 Mar 45 Hiltsteden, Germany
12. 18 Mar 45 Berlin, Germany
13. 19 Mar 45 Plauen, Germany
14. 24 Mar 45 Twente, Holland
15. 30 Mar 45 Vagseck, Germany
16. 1 Apr 45 Kiel, Germany
17. 5 Apr 45 Weiden, Germany
18. 10 Apr 45 Cransburg, Germany
19. 16 Apr 45 Flattling, Germany

 VERIFIED.

Melvin D. Cooper

 MELVIN D. COOPER, 2d Lt., 02045340,
 ADJUT. PERFORMER OFFICER.



Small stamp on left
 inside left of
 American landing strip

O-P-E-R-A-T-I-O-N-A-L S-O-R-T-I-E R-E-C-O-R-D

NAME: COOPER, MELVIN D.
 DUTY: Bomb.

RANK: 1st. Lt.
 A.S.N.: 0-2065340

SQUADRON: 369th.
 GROUP: 306th.

Date of Missions	Group Mission Numbers	Indiv. Mission Numbers	Geographical Location of Targets	Combat Time	Total Combat Time
Feb. 21, 1945		1	NURNBERG	8:50	
22		2	WITSTOCK	8:45	
23		3	PLAUE	9:45	
26		4	BERLIN	9:30	
27		5	LEIPZIG	8:20	
28		6	HAGEN	7:55	
Mar. 2		7	BOHLEN	10:05	
4		8	ULM	8:00	
7		9	GIESSEN	8:15	
12		10	SWINEMUNDE	10:30	
14		11	HILDESHEIM	7:55	
18		12	BERLIN	9:00	
19		13	PLAUE	9:50	
24		14	TWENTE	5:35	
30		15	VEGESACK	8:30	
Apr. 3		16	KIEL	8:20	
5		17	WEIDEN	10:55	
10		18	ORANIENBURG	9:20	
16		19	PLATTLING	9:15	
May 8		non sortie	SPEC. MISSION	6:15	174:50

CERTIFIED CORRECT:

Richard Nickelhoff
 RICHARD NICKELHOFF,
 Captain, AC,
 Ass't. Deputy For Oprns.
 306th. Bomb. Gp. (H)